

NEW  
2020



## Hygiene Plus Range

### Contact details

Dewhurst contact details for lift products, sales and support.

For full details of our complete range of products and for further technical information, please visit our website at [www.dewhurst.co.uk](http://www.dewhurst.co.uk) or call us on +44(0) 20 8744 8200

**Dewhurst**

Unit 9, Hampton Business Park, Hampton Road West, Feltham TW13 6DB

**General Order Enquiries**

t: 020 8744 8200

f: 020 8744 8299

e: [orders@dewhurst.co.uk](mailto:orders@dewhurst.co.uk)

**UK Sales**

**Paul Thienel**

m: 07500 843 857

e: [pthienel@dewhurst.co.uk](mailto:pthienel@dewhurst.co.uk)

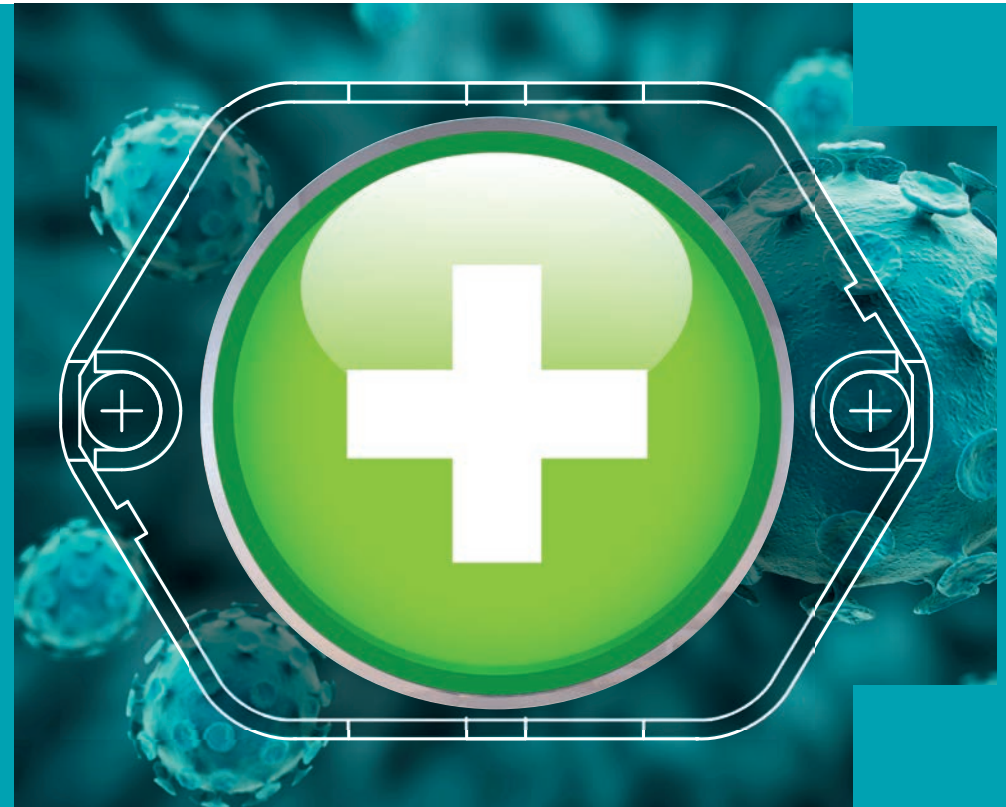
**Global (excl. UK)**

**Peter Dewhurst**

t: +44 7799 487 646

e: [pdewhurst@dewhurst.co.uk](mailto:pdewhurst@dewhurst.co.uk)

This information is for guidance only and is not intended to form the basis for contract. All dimensions in mm. All orders are subject to Dewhurst Terms & Conditions which are available on our website or by request.



# Hygiene Plus Contactless Landing Operating Panel

## Dewhurst Contactless Landing Operating Panel

- ✓ Perfect for new build, modernisation or retrofit applications
- ✓ Reliable IR sensing unit alongside dependable Dewhurst pushbutton
- ✓ Adjustable trigger range for sensor
- ✓ Fully compatible with Dewhurst surface mount & flush fit fixture range
- ✓ Pre-wired unit for simple installation



Perfect for retrofit applications shown

## 4 x Surface mount options



Profile Plus  
Stainless Steel

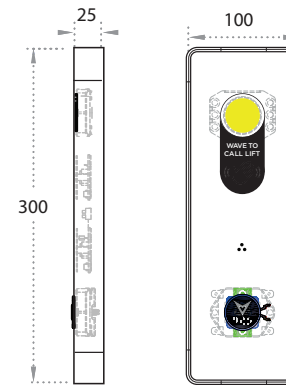
Unity  
Grey

Unity  
Black

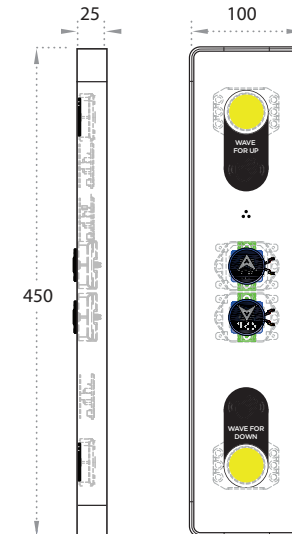
Unity  
White



## 4 x legend options



Unity Terminal



Unity Intermediate



## Technical Details:

- Sensor adjustment range: 60 to 1100mm – range to be pre-programmed depending on building application
- 12 - 24V DC
- Sensor standard lifetime 20 years, pushbutton tested to over 1x10<sup>6</sup> operations
- Fixture conforms to EN81-70
- Compatible with US91, US95 and Hygiene Plus Dewhurst pushbuttons
- Available with Dual and Bi+ pushbutton illumination
- Prewired to terminal block

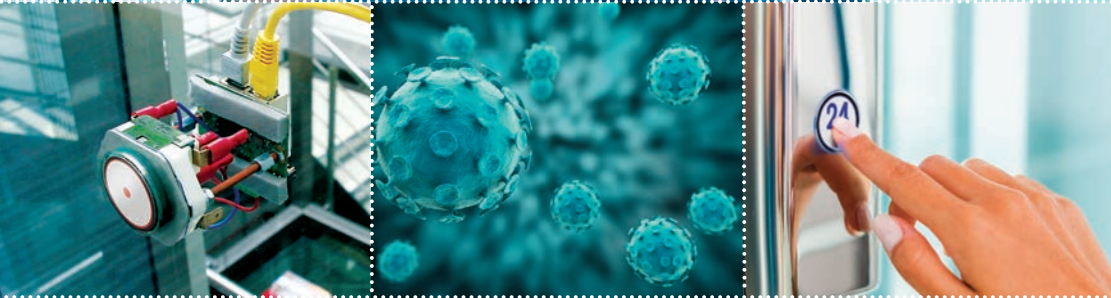


E-Coli



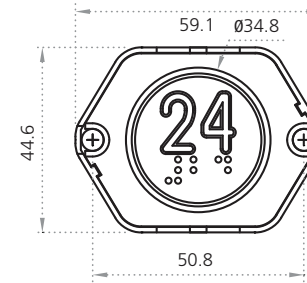
MRSA

Staph A



## Hygiene Plus Antibacterial Pushbuttons

### US95 AB



BODIES	Compact 2	ILLUMINATION	Single	COLOURS					
	Compact 2 micro		Dual		Red	Amber	Green	Blue	White
	Compact 3		Bicolour						
	Compact 3P		Bicolour+						

#### Hygiene Plus



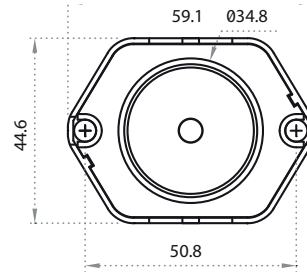
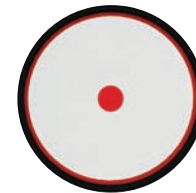
Antibacterial

#### Key features

- Pressel and surround incorporates silver ion enabled\* anti bacterial technology
- Protection against bacteria such as MRSA, E-Coli, Staph A & more
- ISO 22196 antibacterial certification
- 15mm high tactile legend with braille
- Legend and halo illumination
- Vandal resistant EN81-71 cat 2
- Standard pressels are white plastic moulded with opal polycarbonate

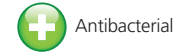
ANTIBACTERIAL COLOURS		
	Black	White

### US91 AB



BODIES	Compact 2	ILLUMINATION	Single	COLOURS					
	Compact 2 micro		Dual		Red	Amber	Green	Blue	White
	Compact 3		Bicolour						
	Compact 3P		Bicolour+						

#### Hygiene Plus



Antibacterial

#### Key features

- Pressel and surround incorporates silver ion enabled\* anti bacterial technology
- Protection against bacteria such as MRSA, E-Coli, Staph A & more
- ISO 22196 antibacterial certification
- Legend and halo illumination
- Vandal resistant EN81-71 cat 2
- Standard pressels are white plastic moulded with opal polycarbonate

ANTIBACTERIAL COLOURS		
	Black	White

\* Silver ion enabled anti bacterial technology within the buttons is registered with the EPA (USA) and is registered by the on Article 95 list under the BPR EU 528/2012. Silver ion enabled anti bacterial technology is a supplement to and not a substitute for standard infection control

## Hygiene Plus Antibacterial Fixtures Range



## Hygiene Plus Dewhurst Brass Push



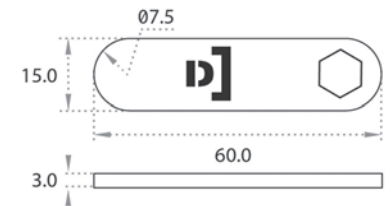
## Making a **push** for safety



The Covid-19 crisis has focused the spotlight on harmful substances on lift buttons. At Dewhurst, we are continuing to innovate to keep people moving safely.

Alongside our current 'Hygiene Plus' pushbutton range, we have launched a Brass Push keyring attachment. A simple, but effective solution to ensure safety of all lift users.

Please get in touch with us if you would like to hear more about what we are doing to keep the lift industry and lift users safe.



As a global business, we feel a responsibility to give back to our local community. **100% of the profits** from this product will be donated to our charity partners.



**Brass Push** exclusively available for sale in the UK from our sister company A&A electrical  
[www.aa-electrical.com](http://www.aa-electrical.com)