



Dewhurst New US85 Pushbutton

The new US85 is a replacement for our previous US85 pushbutton. The new US85 however benefits from being able to use the full range of square Jumbo pressels, whilst still having the signature wide illuminated surround of the US85 and fitting into the same cut-out.

The button was designed not only to meet the requirements of EN81-70 Annex G.1, but also for use in larger buildings such as hospitals, airports and shopping centres, where the sheer scale of the building necessitates a larger button. As the new US85 use Jumbo pressels a wide range of options are available. Using the EN range you have a black background with tactile legend (Braille optional) and this provides the contrast for EN81-70. Also available are stainless steel or brass pressels again with tactile legends and optional Braille.

Features & Benefits

- 30mm high tactile legend with optional Braille
- Large thick halo surround is illuminated in a range of colours. Pressel legend illuminates white or red
- Legend & halo can be constantly illuminated at half intensity, switching to full intensity for indication of position or call acceptance
- Large range of pressel legends
- Matching range includes keyswitches, rocker switches and indicators
- Vandal resistant
- Meets EN81-20/50, EN81-70, EN81-71 (Category 1), EN81-72, EN81-73, EN60529 (IP54)



Illumination, Finishes & Marking

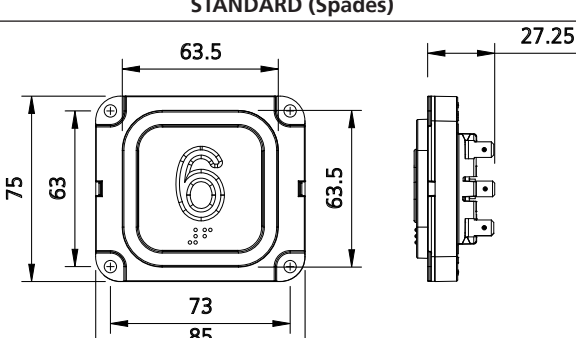
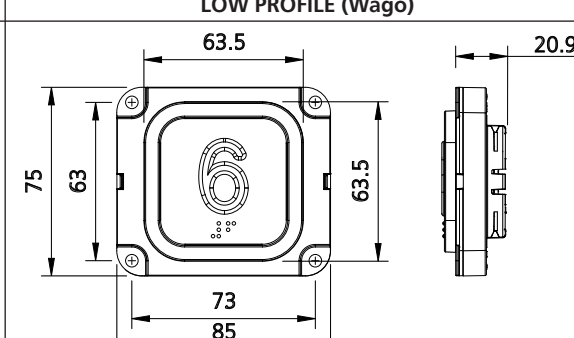
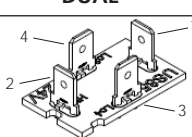
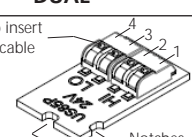
- Range of halo colours available, red, yellow, green, blue or white (colour achieved by plastic and white LED illumination)
- Black pressel finish for calls, with extended green for main exit floor and yellow finish for alarm button*
- Other pressel finishes including brushed stainless steel, mirror stainless steel, brushed brass and mirror brass**
- Single or dual illumination options available
- A large range of legends in Helvetica Medium characters & symbols are available
- 30mm high opal tactile legends with optional Braille are formed during the moulding of the pressel body

* Standard pressels are a black plate moulded with opal polycarbonate

** Standard pressels are a brushed stainless steel plate moulded opal, or red polycarbonate



Dimensions

STANDARD (Spades)		LOW PROFILE (Wago)	
			
SINGLE	DUAL	SINGLE	DUAL
<p>Single illumination possible by using a DUAL board and common the terminals: HI1 to LO3 HI2 to LO4</p>	 <p>1 = FULL (HI1) 2 = FULL (HI2) 3 = DIM (LO3) 4 = DIM (LO4)</p>	<p>Single illumination possible by using a DUAL board and common the terminals: HI1 to LO3 HI2 to LO4</p>	<p>Press here to insert and remove cable</p>  <p>1 = FULL (HI) 2 = FULL (HI) 3 = DIM (LO) 4 = DIM (LO)</p>

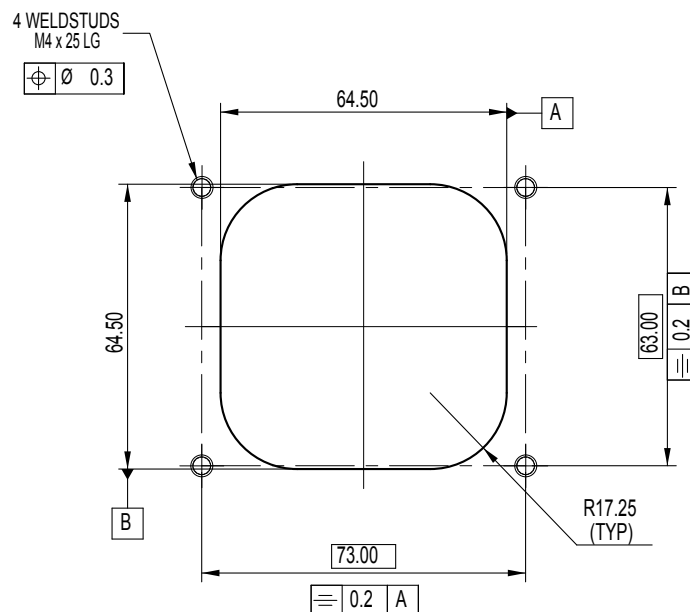
Please note the orientation of PCB notches to the tab (Standard) or Wago connector (low profile) numbers

Warning: Slight pressure is only required to insert or remove cable on Wago connector, excessive force will damage connector

Technical Details

Weight:	70grms		
Moulded in:	High grade polycarbonate		
Pressel plate material:	Anodized aluminium (black, green, yellow), stainless steel or brass		
Pressel plate area:	2500mm ²		
Button force:	3.5N		
Pushbutton size:	85mm w x 75mm h x 27.25mm d		
Pressel size:	50mm w x 50mm h x 4.5mm d		
Legend size:	30mm high, Helvetica medium characters		
LED current:	20mA (typically)		
LED voltage:	12/24 a.c./d.c. ±15%		
Wago cable size:	Up to 0.75 mm ² solid or flexible (use slight pressure to insert or remove cable)		
Operation:	Wiping action, slow make and break with solid silver contacts		
Ratings:	10 amps max		
	240V a.c. at 3.0 amps max. resistive loads	- min. no. of operations:	1 x 10 ⁶
	240V d.c. at 0.5 amps max. resistive loads	- min. no. of operations:	2 x 10 ⁶
	110V d.c. at 100mA max. inductive TC40ms	- min. no. of operations:	1 x 10 ⁶
	12V d.c. at 5mA max. resistive loads	- min. no. of operations:	10 x 10 ⁶
Contact arrangements:	2 N/O, 2 N/C or 1 N/O + 1 N/C		Please note that it is possible for the N/O contact to make before the N/C contact has opened on the 1 N/O + 1 N/C configuration
Code compliance:	Meets EN81-20/50, EN81-70, EN81-71(Category 1), EN81-72, EN81-73		
IP Rating:	EN60529 (IP54)		

Cutouts & Stud Positions



Note: Adapter plate is available to fit the new US85 to the old stud positions

Cleaning your New US85 Pushbutton

Many **Dewhurst** lift products are made of **polycarbonate** (Using GE's **Lexan®** or Bayer's **Makrolon®**).

The New US85 Jumbo is highly durable and vandal resistant but the plastic parts can be damaged by aggressive cleaning agents, Dewhurst therefore recommends:



Clean the part with a **cotton cloth and warm water** before applying the cleaning product



Use **PH-neutral or slightly acid cleaning products only** (including aromatised ones) Ethylic alcohol, isopropyl alcohol or ethylene glycol based multipurpose cleaning products and dish soaps are suggested.



Dilute the cleaning product in warm water and apply using a wet cotton cloth.



Grease, glue and paint may be removed with ethylic alcohol or isopropyl alcohol.

Recommended Cleaning Products (*):

Europe	North America
Windus - Brial Top - Ecolab Mr. Proper Surfaces Delicates - Proctor & Gamble Palmolive, Colgate Palmolive	Formula 409® Cleaner Degreaser Joy®, Proctor & Gamble Windex, Drackett Products Palmolive, Colgate Palmolive

(*): Due to the vast number of cleaning products available on the market, the list of recommended products above is an illustration only

Note:

- Do not use abrasive cleaning agents
- Do not use sharp tools to remove dirt (chewing gum, glue, etc.)
- Do not use solvents based with Ketones, benzene, methanol, toluene (also known as methylbenzene or phenyl methane) or alkaline and ammonia based cleaning agents
- Do not use cleaning agents at high temperatures
- Do not leave cleaning agents on the parts for long periods: remove immediately after cleaning using a wet cotton cloth and warm water
- Do not use dry cotton cloths and sponges